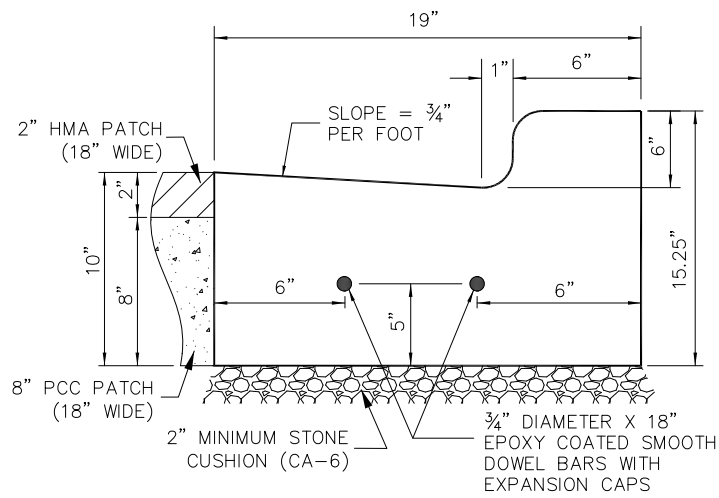


B6.12 CURB AND GUTTER (DEPRESSED)



B6.12 CURB AND GUTTER

NOTES:

1. IF ANY CURB IS TO BE REPLACED, THE ADJACENT ASPHALT PAVEMENT SHALL BE SAWCUT (FULL DEPTH) AND REMOVED TO A DEPTH OF 10". AFTER THE CURB IS POURED AND CURED, AN 8" P.C.C. BASE PATCH SHALL BE INSTALLED AND A 2" HMA SURFACE PATCH SHALL BE INSTALLED TO MATCH THE SURROUNDING PAVEMENT ELEVATIONS.
2. ANY CURB REQUIRING MODIFICATION (BARRIER TO DEPRESSED, OR VICE VERSA) SHALL BE COMPLETELY REMOVED AND REPLACED. SAW-CUTTING EXISTING CURB AS A MEANS TO CONVERT IT FROM BARRIER TO DEPRESSED IS PROHIBITED.
3. THE LIMITS OF CURB REPLACEMENT SHALL BE SAW-CUT TO PROVIDE A CLEAN, STRAIGHT BREAK TO WORK AGAINST.

REVISION: 1/1/20



VILLAGE OF RIVER FOREST
PUBLIC WORKS - ENGINEERING
400 PARK AVE.
RIVER FOREST, IL 60305
PH. (708)-366-8500

CURB REPLACEMENT DETAIL