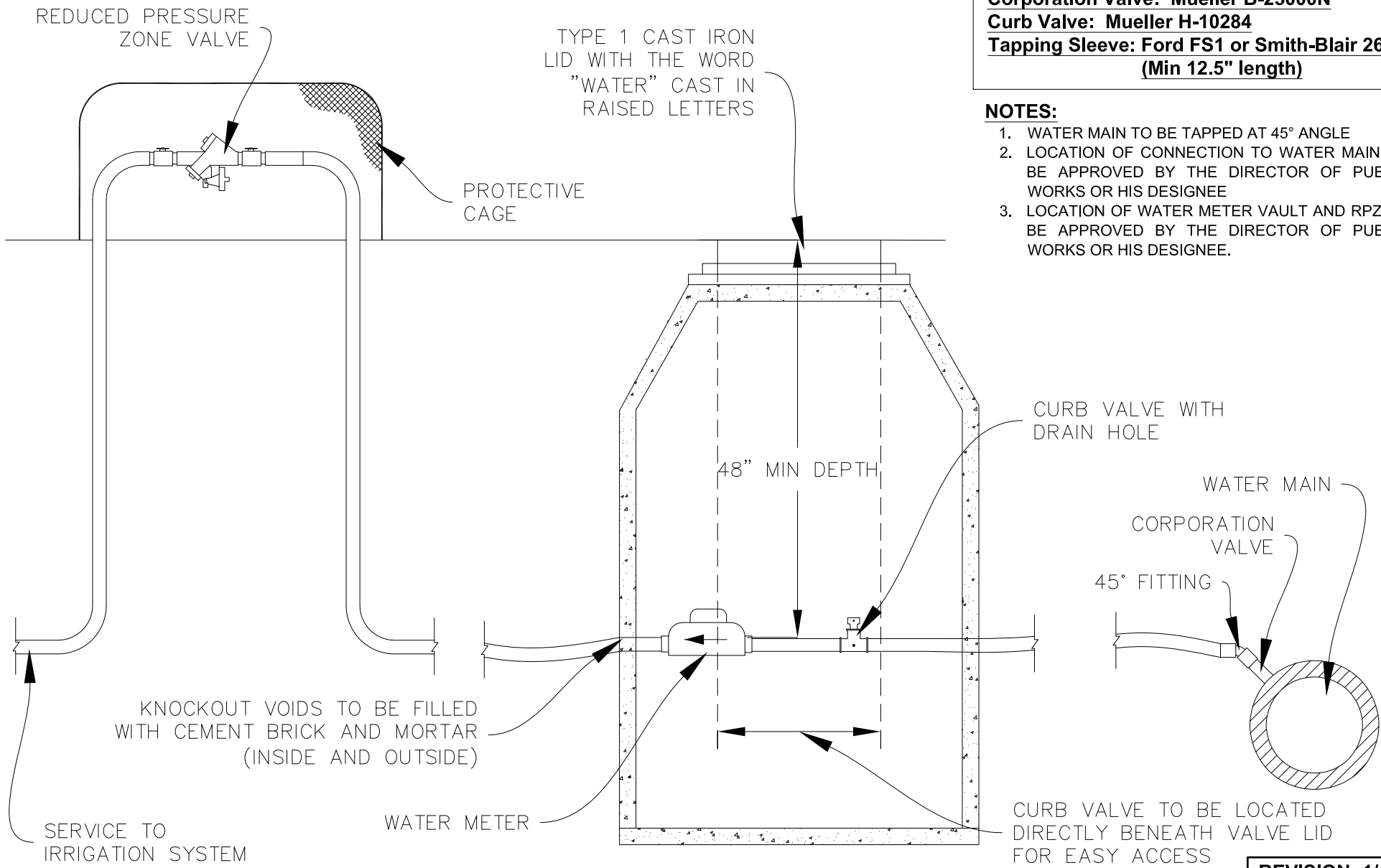


SPECIFICATIONS

45° Fitting: Ford LA02-66-NL or LA02-77-NL
Corporation Valve: Mueller B-2500N
Curb Valve: Mueller H-10284
Tapping Sleeve: Ford FS1 or Smith-Blair 264
(Min 12.5" length)

NOTES:

- 1. WATER MAIN TO BE TAPPED AT 45° ANGLE
- 2. LOCATION OF CONNECTION TO WATER MAIN TO BE APPROVED BY THE DIRECTOR OF PUBLIC WORKS OR HIS DESIGNEE
- 3. LOCATION OF WATER METER VAULT AND RPZ TO BE APPROVED BY THE DIRECTOR OF PUBLIC WORKS OR HIS DESIGNEE.



REVISION: 1/1/20



VILLAGE OF RIVER FOREST
PUBLIC WORKS - ENGINEERING
400 PARK AVE.
RIVER FOREST, IL 60305
PH. (708)-366-8500

WATER METER VAULT DETAIL