



Village of River Forest Sustainability Commission
Briefing to the VRF Board of Trustees
August 2020

River Forest Sustainability Commission (RFSC)

August 2020

Name	Role	Term Expires
Lisa Gillis	Chair	4/30/21
Lauren Behan	Commissioner	4/30/21
Susan Charrette	Commissioner	4/30/21
Beth Cheng	Commissioner	4/30/23
Cary McLean	Commissioner	4/30/23
Shannon Roberts	Commissioner	4/30/23
Eric Simon	Commissioner	4/30/21
Eleanor (Ellie) Raidt	Student Commissioner	9/30/20
John Anderson	Administrator	VRF Director Public Works

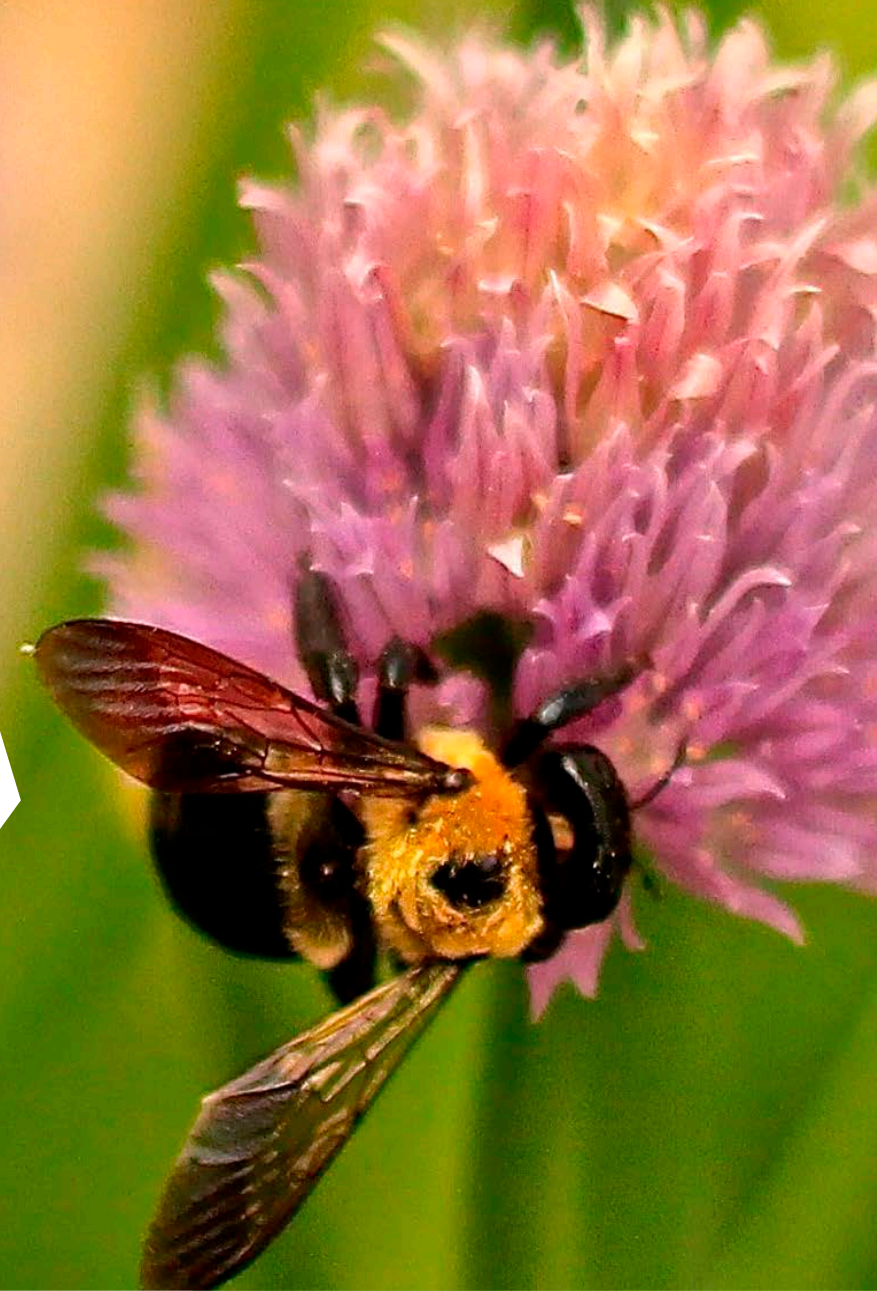
RFSC Objectives

- ▶ To enhance the quality of life of its residents through the study and promotion of sustainable practices that conserve natural resources and protect the environment.
- ▶ To enable the Village, its residents and its institutions to protect the environment by reducing the level of greenhouse gas emissions we are producing and that are the source of Climate Change.



RFSC Strategies & Programs

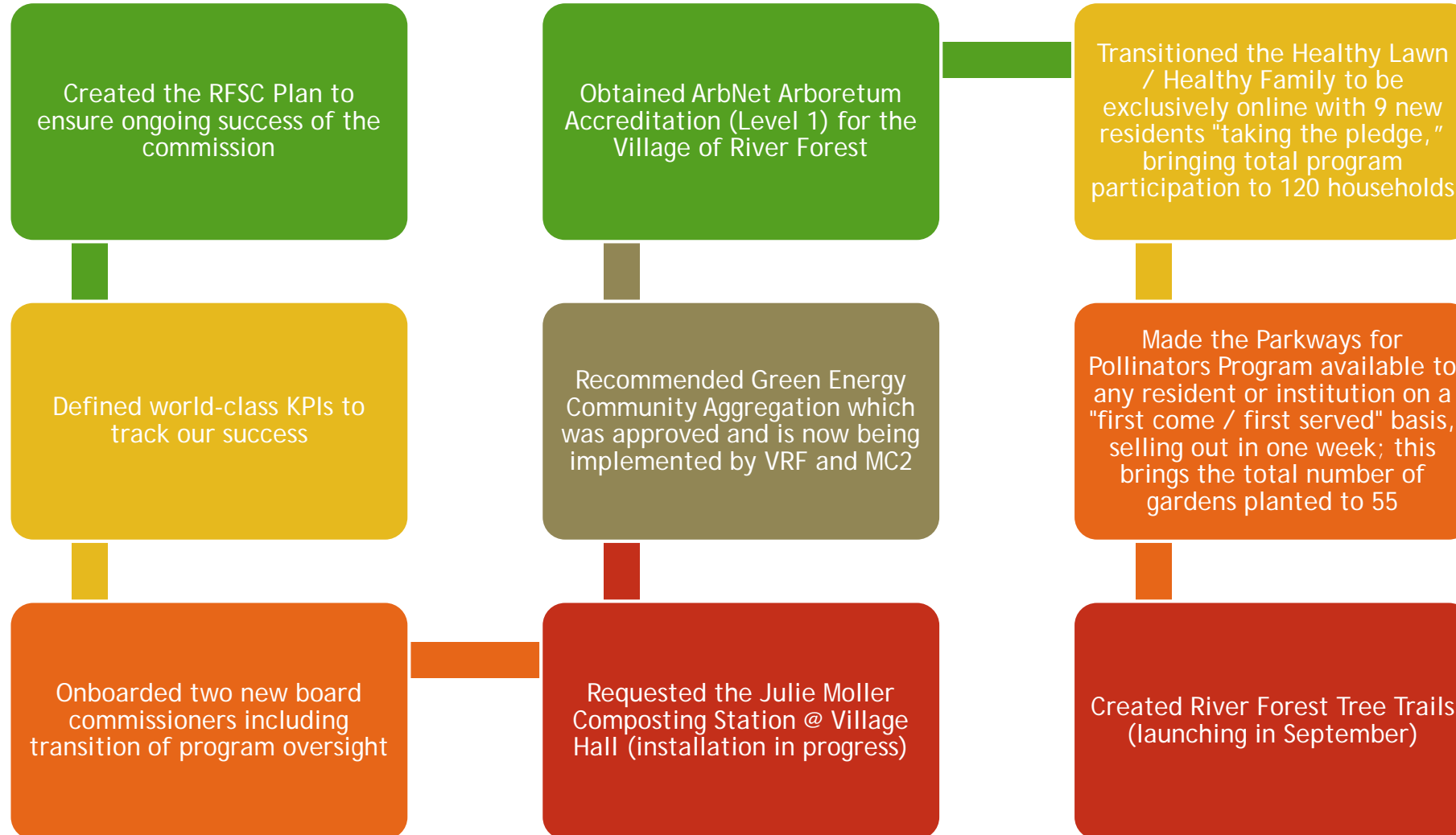
Focus	Strategy	Project Type	Project
Energy	Replace fossil fuel sources with renewable energy	Renewables	Rooftop Solar
			Community Choice Aggregation
			Community Solar
			SolSmart Certification
Transportation	Expand green transportation & mobility options	Public Transportation	Public Transportation Plan
		Walkability	VRF Walkability Plan
		Biking	The Bicycle Plan for the VRF VRF Biking Certification
		Parking	Parking Plan
Water	Protect water sources as well as reduce water consumption	Permeable Surfaces	Green Alleys
			Green Parking Lots & Walkways
			Residential Requirements
Waste	Reduce waste & increase waste diversion	Rainwater Reclamation	Rain Barrel Sales through MWRD
		Composting	Residential Curbside
			Institutional Curbside
			Pumpkin Smash
		Reducing	Single Use Plastics
			Residential Curbside & Special Pick-up
			Onsite Commercial
			Holiday Lights Collection
			Recycling Extravaganza
			Beyond the Bin
C&D Construction Materials			
Green Ecosystems	Sequester carbon & enhance support for eco-systems	Gardens	Parkways for Pollinators (P4P)
			Inspirational Edible Gardens
			Native Gardens
			Community Gardens
		Integrated Pest Management	Healthy Lawn / Healthy Family
			Midwest Grows Green
		Trees	Tree <Location> Map
			Annual Tree Tour
			ArbNet Arboretum Accreditation
			River Forest Tree Trails
Education	Share information to motivate resident involvement	Waste Sorting	SIO Stations
			Zero Waste Stations
			Green Block Parties
Impact	Measure our success	Assess, Track & Report	Village of River Forest Green Directory
			RFSC Participation @ Community Events
			Program KPIs
			RFSC Mission KPIs



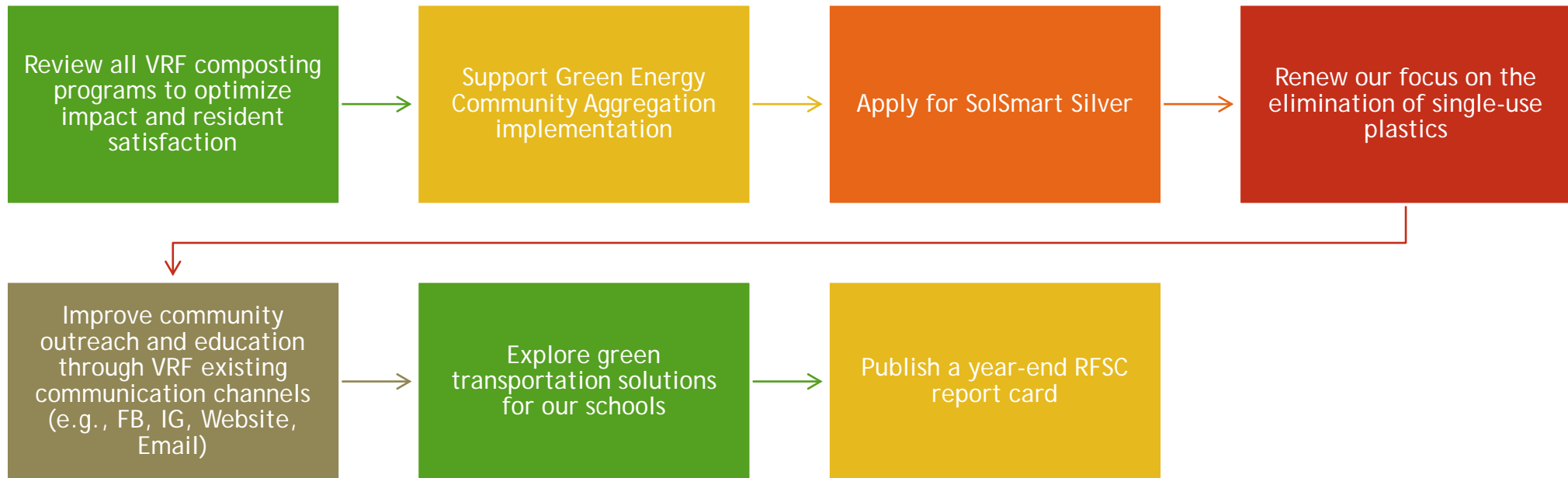


We are goal-oriented
working commission

2020 Achievements YTD



2020 Focus for Remainder of Year



Impact of Green Energy Community Aggregation on Our Numbers

Sources	2018 MT CO2e	
	Generated	Diverted
Natural Gas - Residential	62,863.89	
Electricity	49,683.85	
Passenger vehicle use - gasoline	8,375.84	
Freight train		
Waste - MSW	955.84	
Water and wastewater energy use		
Waste - Recyclables		(2,189.35)
Waste - Compost		(349.72)
Forests Lands		
Inventory	121,879.42	(2,539.07)
Total	119,340.35	

** Program is estimated to eliminate nearly 26,000 metric tons of CO2 per year, equivalent to the annual emissions of approximately 5,500 cars. It would take 34,000 acres of forest (137 times the size of Thatcher Woods) to sequester the same amount of carbon

** Source:

https://www.vrf.us/uploads/cms/documents/guides/faq_green_muni_river_forest_dr_aft_commission_comments_ad_tweaks_6.18.2020.pdf



The background features a series of overlapping, semi-transparent green geometric shapes, primarily triangles and quadrilaterals, that create a sense of depth and movement. The colors range from a light, pale green to a vibrant, saturated lime green. The shapes are layered, with some appearing in front of others, creating a complex, layered effect. The overall composition is clean and modern, with a focus on geometric forms and color gradients.

Questions?